

santamar

ABOUT THE PROJECT/ ACERCA DE NUESTRO PROYECTO



Private oasis in Akumal, sitting a few steps away from a secluded beach that ensures total privacy. It features an easy access to a beautiful white sandy beach.

Un oasis privado en Akumal, ubicado a pocos pasos de una playa aislada que garantiza total privacidad. Cuenta con fácil acceso a una hermosa playa de arena blanca.

Enjoy the sunsets through the jungle or go kayaking over the crystal clear waters of the Mexican Caribbean.

Disfruta de las puestas de sol a través de la jungla o practica kayak en las aguas cristalinas del Caribe mexicano.

An absolute dream home to delight the most discerning of tastes.

Un hogar de ensueño para deleitar los gustos más exigentes.



117 units & 7 buldings
117 unidades y 7 edificios



1 & 2 bedrooms / 1 & 2 bathrooms
1 y 2 recámaras / 1 y 2 baños



Private terraces
Terrazas privadas



Private Gardens*
Jardines Privados*



Common areas
Áreas comunes

*Garden units / *Unidades garden

santamar



Renders can be modified without prior notice or cause. / Los renders pueden sufrir cambios menores sin previo aviso o causa.

SANTAMAR



Renders can be modified without prior notice or cause. / Los renders pueden sufrir cambios menores sin previo aviso o causa.

santamar



Renders can be modified without prior notice or cause. / Los renders pueden sufrir cambios menores sin previo aviso o causa.

santamar



Renders can be modified without prior notice or cause. / Los renders pueden sufrir cambios menores sin previo aviso o causa.

santamar



Renders can be modified without prior notice or cause. / Los renders pueden sufrir cambios menores sin previo aviso o causa.

A woman with long brown hair, wearing a white bikini, is sitting on a dark brown cushion in a tropical courtyard. She is looking towards the left. The courtyard has a stone-paved floor and is surrounded by lush greenery, including large banana plants and various tropical trees. In the background, there is a wall made of light-colored, irregular stones. To the right, there are several wicker baskets and a large, shallow, circular object on a stand. The scene is lit with warm, golden light, suggesting sunset or sunrise. The word "santamar" is written in blue, lowercase letters on a white rectangular sign in the upper right corner.

santamar

Renders can be modified without prior notice or cause. / Los renders pueden sufrir cambios menores sin previo aviso o causa.

santamar



Renders can be modified without prior notice or cause. / Los renders pueden sufrir cambios menores sin previo aviso o causa.

santamar



Renders can be modified without prior notice or cause. / Los renders pueden sufrir cambios menores sin previo aviso o causa.

The background features a series of white, wavy, concentric lines that resemble topographical contour lines or a stylized wood grain pattern. These lines flow from the left side of the frame towards the right, creating a sense of movement and depth. The lines are of varying thickness and curvature, some forming tight spirals while others are more elongated and wavy.

**master plans /
PLANOS MAESTROS**

GARDEN MASTER PLAN



mezzanine master plan



PENTHOUSE MASTER PLAN



JUNGLE / JUNGLA

STREET / CALLE

OCEAN / OCÉANO

A

B

C

D

E

F

G

301

302

303

304

305

307

306

301

302

303

304

305

301

302

303

304

305

301

302

303

304

305

301

302

303

304

305

301

302

303

304

305

301

302

303

304

305

301

302

303

304

305

301

302

303

304

305

301

302

303

304

305

301

302

303

304

305

301

302

303

304

305

301

302

303

304

305

301

302

303

304

305

301

302

303

304

305

301

302

303

304

305

301

302

303

304

305

301

302

303

304

305

The background of the entire page is a solid, deep blue color. Overlaid on this background are numerous white, thin, wavy lines that flow across the page. These lines form a complex, organic pattern that resembles topographical contour lines or perhaps the grain of wood. The lines are most dense and intricate on the left side, where they form several concentric, roughly circular shapes. From there, they flow and curve towards the right, becoming more linear and parallel as they approach the edge of the frame. The overall effect is one of dynamic movement and organic complexity.

**FLOOR PLANS /
PLANOS**

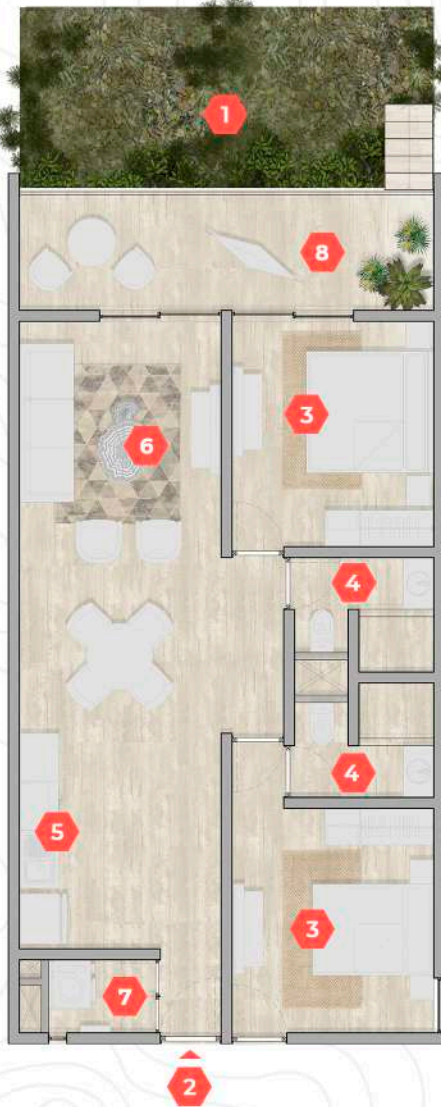


GARDEN LOFT

- 1** Main Entrance
Entrada principal
- 2** Bedroom
Recámara
- 3** Bathroom
Baño
- 4** Kitchen
Cocina
- 5** Kitchen Island
Barra de cocina
- 6** Living area
Sala
- 7** Laundry area
Área de lavado
- 8** Terrace
Terraza

	FT ²	M ²
INTERIOR	594.21 ft ²	55.20 m ²
TERRACE	147.56 ft ²	13.70 m ²
GARDEN	446.74 ft ²	41.50 m ²
	1,188.54 ft²	110.41 m²

Kitchen Island is an upgrade / Barra de cocina tiene costo extra



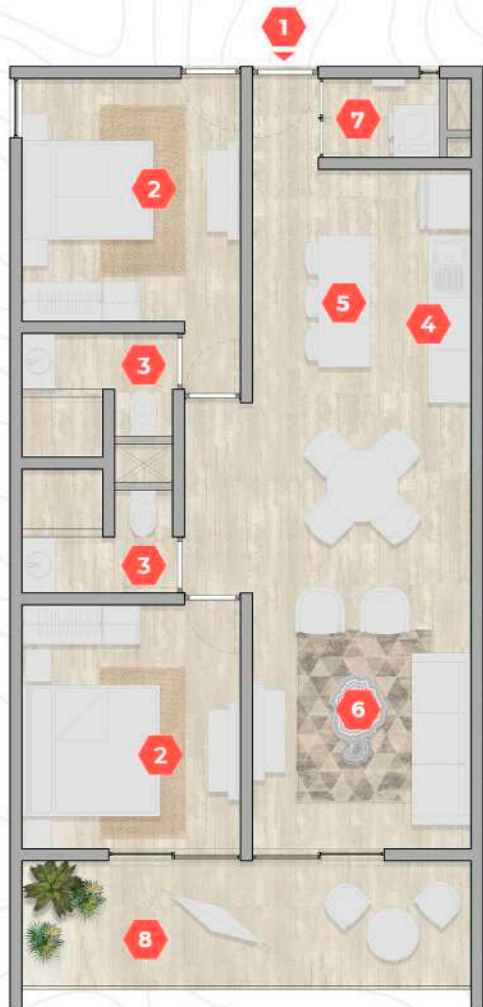
GARDEN CONDO

2 BEDROOMS / 2 RECÁMARAS

- 1** Garden
Jardín
- 2** Main Entrance
Entrada principal
- 3** Bedrooms
Recámaras
- 4** Bathrooms
Baños
- 5** Kitchen
Cocina
- 6** Living area
Sala
- 7** Laundry area
Área de lavado
- 8** Terraces
Terrazas

	FT ²	M ²
INTERIOR	856.23 ft ²	79.54 m ²
TERRACE	145.37 ft ²	13.50 m ²
GARDEN	225.46 ft ²	20.94 m ²
	1,227.07 ft²	113.99 m²

Kitchen Island is an upgrade / Barra de cocina tiene costo extra



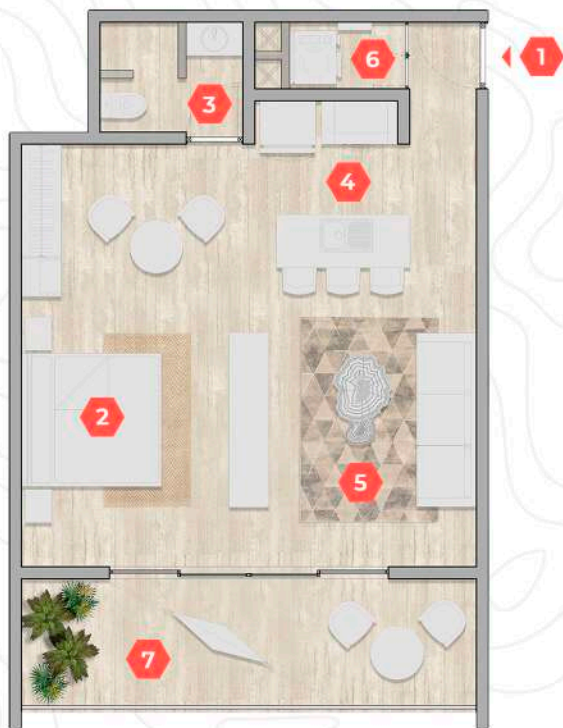
mezzanine CONDO

2 BEDROOMS / 2 RECÁMARAS

- 1** Main Entrance
Entrada principal
- 2** Bedrooms
Recámaras
- 3** Bathrooms
Baños
- 4** Kitchen
Cocina
- 5** Kitchen Island
Barra de cocina
- 6** Living area
Sala
- 7** Laundry area
Área de lavado
- 8** Terrace
Terraza

	FT ²	M ²
INTERIOR	852.07 ft ²	79.16 m ²
TERRACE	145.31 ft ²	13.50 m ²
	998.79 ft ²	92.79 m ²

Kitchen Island is an upgrade / Barra de cocina tiene costo extra



PENTHOUSE LOFT

- 1 Main Entrance
Entrada principal
- 2 Bedroom
Recámara
- 3 Bathroom
Baño
- 4 Kitchen
Cocina
- 5 Living area
Sala
- 6 Laundry area
Área de lavado
- 7 Terrace
Terraza

	FT²	M²
INTERIOR	590.29 ft ²	54.84 m ²
TERRACE	147.57 ft ²	13.71 m ²
	737.87 ft²	68.55 m²

PENTHOUSE LOCK OFF CONDO

2 BEDROOMS / 2 RECÁMARAS

- 1** Lock-off access
Acceso lock-off
- 2** Main Entrance
Entrada principal
- 3** Bedrooms
Recámaras
- 4** Bathrooms
Baños
- 5** Kitchen
Cocina
- 6** Kitchen Island
Barra de cocina
- 7** Living area
Sala
- 8** Laundry area
Área de lavado
- 9** Terrace
Terraza
- 10** Private rooftop
Rooftop privado
- 11** Bar
Barra
- 12** Pergola
Pérgola
- 13** Jacuzzi
Jacuzzi

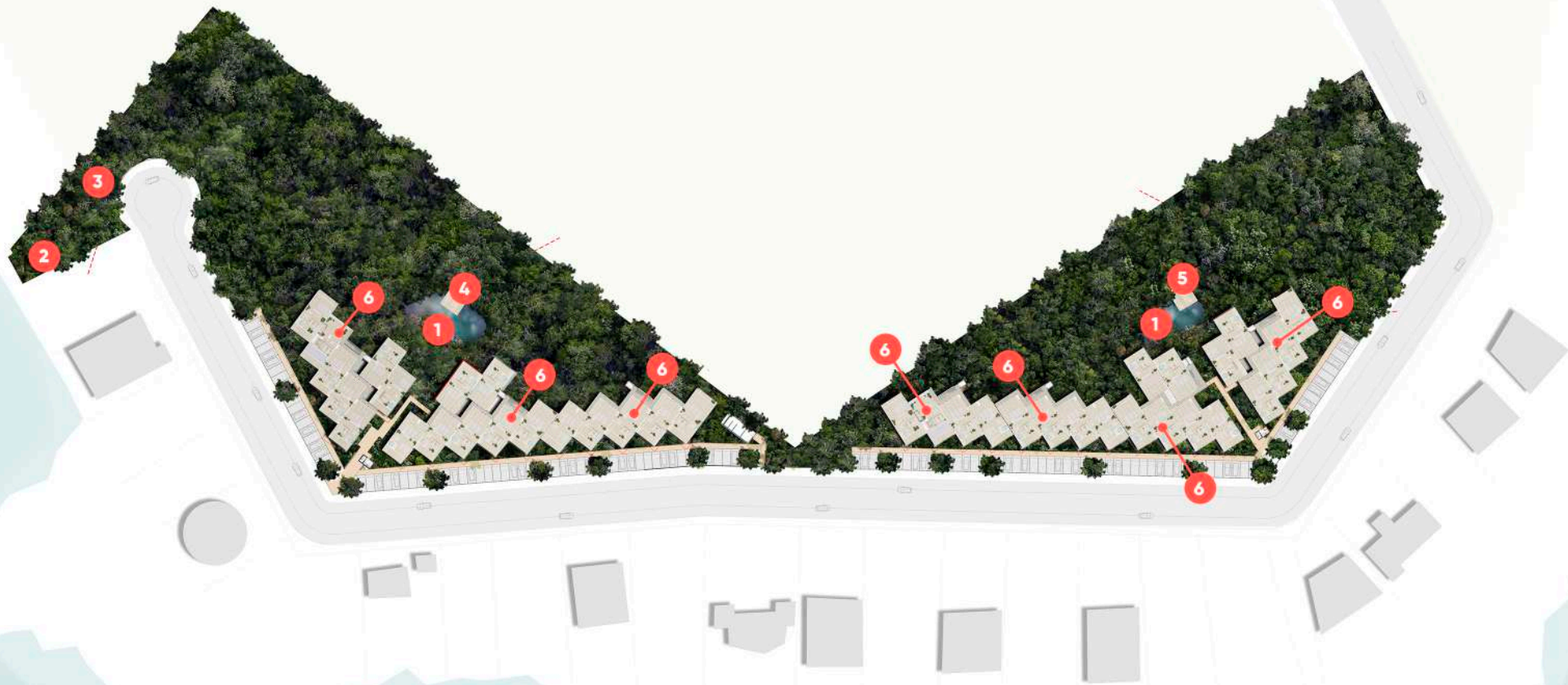
	FT ²	M ²
INTERIOR	839.48 ft ²	77.99 m ²
TERRACE	145.3.1 ft ²	13.50 m ²
ROOFTOP	422.91 ft ²	39.29 m ²
	1,410.29 ft ²	131.02 m ²



Kitchen Island, jacuzzi pergola and bar are an upgrade
Barra de cocina, jacuzzi, barra y pérgola tienen un costo extra

The background features a series of white, wavy, concentric lines that resemble topographical contour lines or a stylized wood grain pattern. These lines flow from the left side of the frame towards the right, creating a sense of movement and depth. The lines vary in thickness and curvature, with some forming tight spirals and others following more elongated, undulating paths. The overall effect is a dynamic and organic visual texture.

**amenities /
amenidades**



1 Two swimming pools /
Dos albercas

2 Access to the beach /
Acceso a la playa

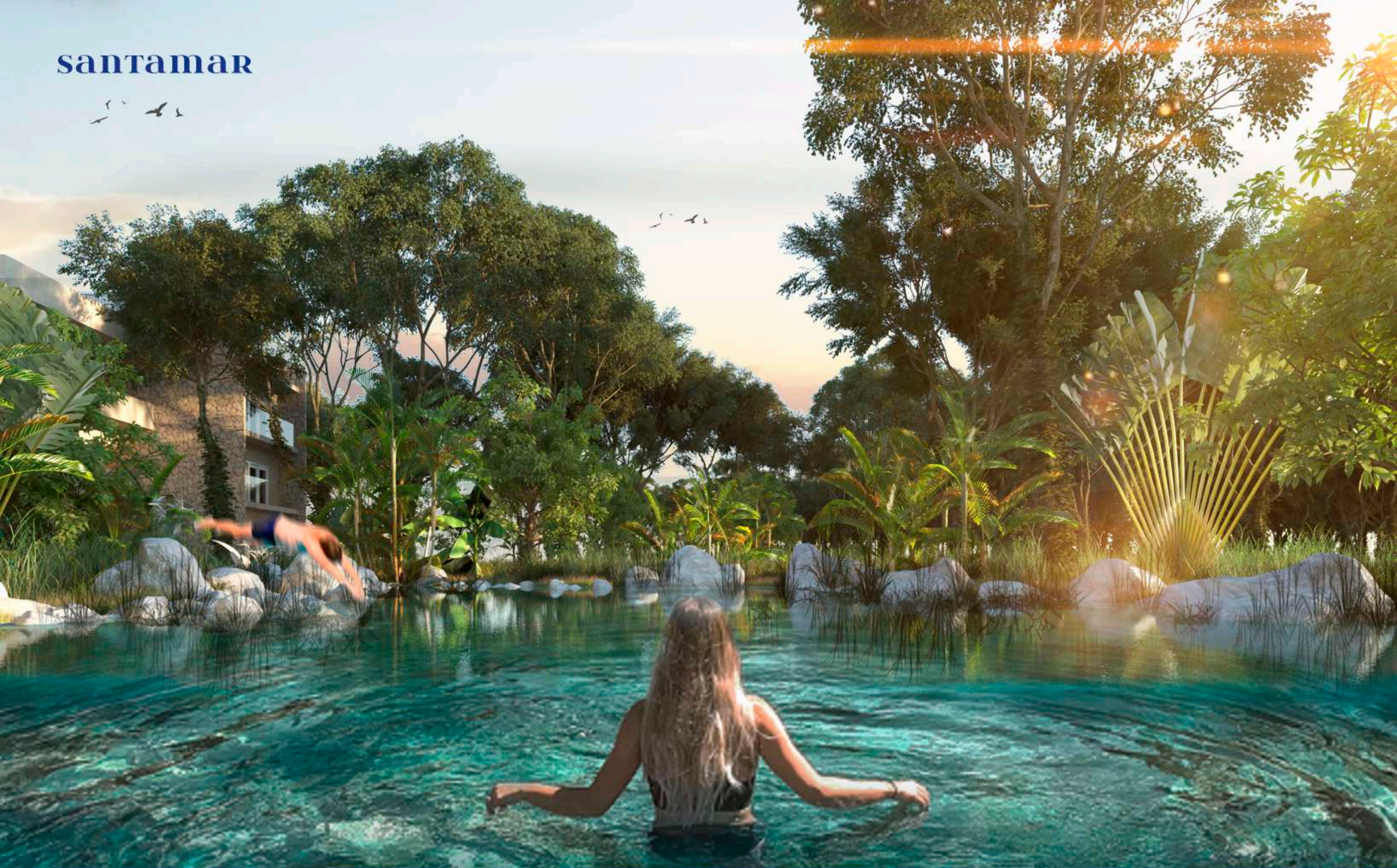
3 Beach lounge area /
Área de lounge de playa

4 BBQ area, WC,
Lounge Area & Gym /
*Área de asador, WC,
Área Lounge y Gimnasio*

5 BBQ area, WC, Lounge Area &
Yoga Studio /
*Área de asador, WC, Área
Lounge y Estudio de Yoga*

6 7 common rooftop with ocean
view from each building /
*7 rooftops comunes con vista
al mar desde cada edificio*

SANTAMAR



Renders can be modified without prior notice or cause. / Los renders pueden sufrir cambios menores sin previo aviso o causa.



ADDITIONAL AMENITIES / AMENIDADES ADICIONALES

TAO WELLNESS CENTER

- Enjoy many different activities throughout the day: Yoga classes, meditation, and Mantra sessions in the Satyarupa Yoga Retreat. / *Podrás disfrutar de diferentes actividades durante el día; clases de yoga, meditación y sesiones de mantra en Satyarupa Yoga Retreat.*
- Enjoy our lap pools. / *Disfruta nuestras albercas de nado.*
- Choose which kind of massage you want or visit our Temazcal for a moment of relaxation. / *Elige qué tipo de masaje quieres esta semana o visita el temazcal para un momento de relajación.*
- Visit our restaurant where we offer different options for you to enjoy before or after your visit. / *Visita nuestro restaurante donde tenemos diferentes opciones para ti.*

**Massages, Temazcal, and the restaurant have additional costs.
/ Masajes, temazcal y restaurante tienen costo adicional.*

**TAO Wellness Center is located 2 km from Santamar.
TAO Wellness Center se encuentra ubicado a 2 km de Santamar.**

ADDITIONAL amenities / amenidades adicionales

JUNGLE FISH BEACH CLUB

- Enjoy your days at our oceanfront terrace, taste our exclusive dishes which were created just for you, and of course don't forget to relax and take a dip in our pool from where you will have a view of the turquoise sea like no other.

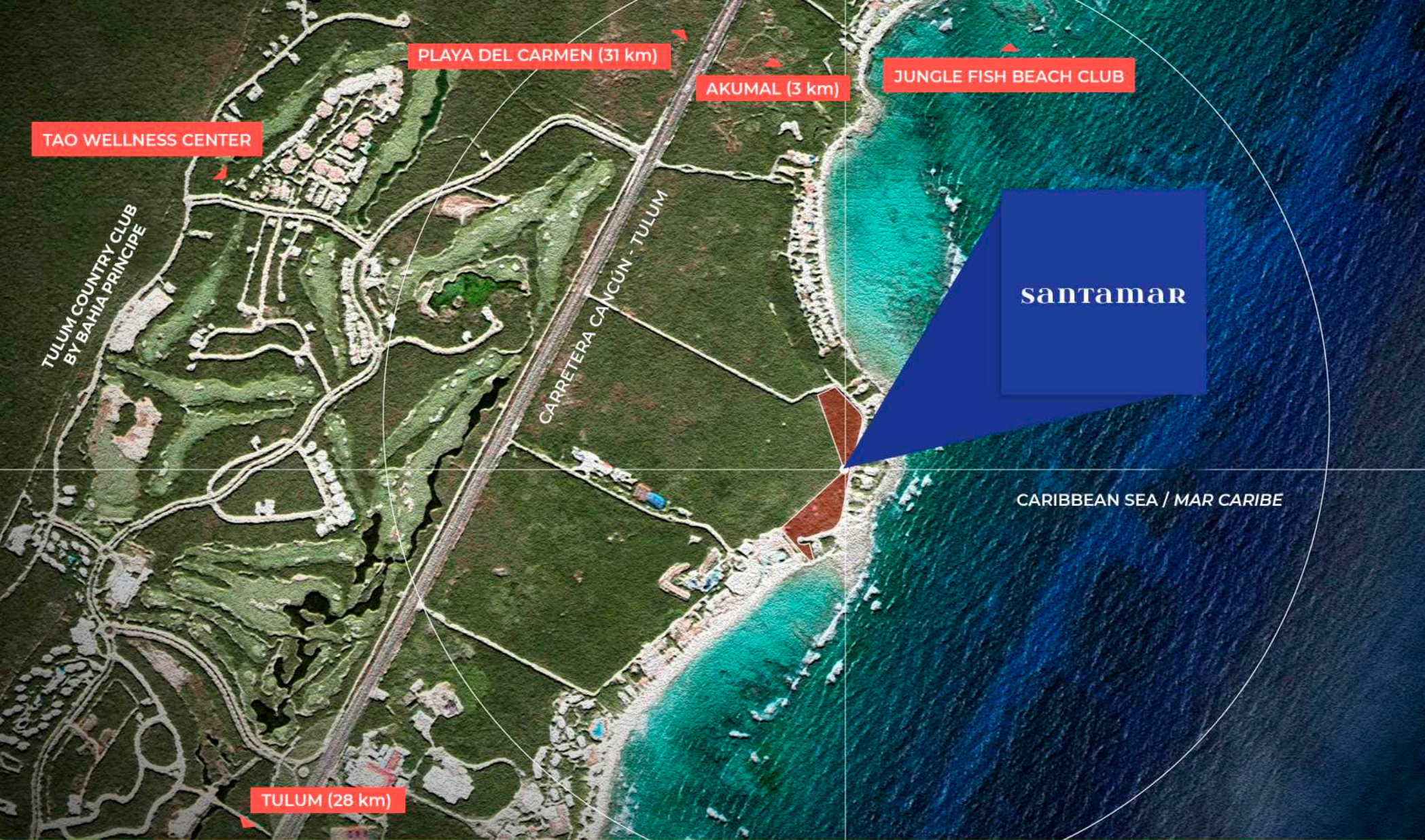
Disfruta de días llenos de relajación en nuestra terraza, degusta nuestros platillos creados especialmente para ti y no olvides descansar o nadar en la alberca desde donde podrás tener vistas inigualables hacia el mar.

Jungle Fish is located 2 km from Santamar.
Jungle Fish se encuentra ubicado a 2 km de Santamar.



The background of the slide is a solid blue color. On the left side, there are several sets of white, concentric, wavy lines that resemble topographic contour lines or ripples in water. These lines flow from the top left towards the bottom right, creating a sense of movement and depth. The lines are of varying thickness and spacing, contributing to an organic, abstract pattern.

**LOCATION /
UBICACIÓN**



PLAYA DEL CARMEN (31 km)

AKUMAL (3 km)

JUNGLE FISH BEACH CLUB

TAO WELLNESS CENTER

TULUM COUNTRY CLUB
BY BAHIA PRINCIPE

CARRETERA CANCÚN - TULUM

Santamar

CARIBBEAN SEA / MAR CARIBE

TULUM (28 km)

TAO Wellness Center and Jungle Fish Beach Club are located 2 kilometers from Santamar. /
TAO Wellness Center y Jungle Fish Beach Club se localizan a 2 kilómetros de Santamar.

santamar